



BRADFIELD COLLEGE ENTERPRISES

Bradfield College: **Steven's House.**

Steven's House was the third girl's boarding house built at Bradfield and was opened in 1996. It has a tasteful modern extension to a 19th Century private dwelling that had latterly been used as the School Sanatorium (Medical Centre). It has a mixture of single and twin rooms all with en-suite facilities. It also has a wonderfully located open plan common room and a computer centre with email and web access.

There is one small kitchen area on each floor for preparing drinks and snacks.

The House is located alongside many of the other boarding houses on the extensive north facing hill side opposite the main entrance to the Sports Complex.



Bedrooms	Total
Single with En-suite	20
Single with Hand Basin	-
Single	-
Twin with En-suite	10
Twin with Hand Basin	-
Twin	-
Total Beds	40
Total Bedrooms	30
Maximum Occupancy	40
Notes: A room needs to be reserved for a locum house parent (this will not be required if the house parent is a resident). Televisions and Videos may be available.	

Facilities	Total
Toilets (excluding En-suites)	5
Showers (excluding En-suites)	-
Baths (excluding En-suites)	2
Disabled Toilets (excluding En-suites)	1
Disabled Showers (excluding En-suites)	-
Common Rooms	1
Kitchens	3
Pool Table	-
Table Tennis	-
Laundry	Yes
Ironing Board	Yes
Parking	5*

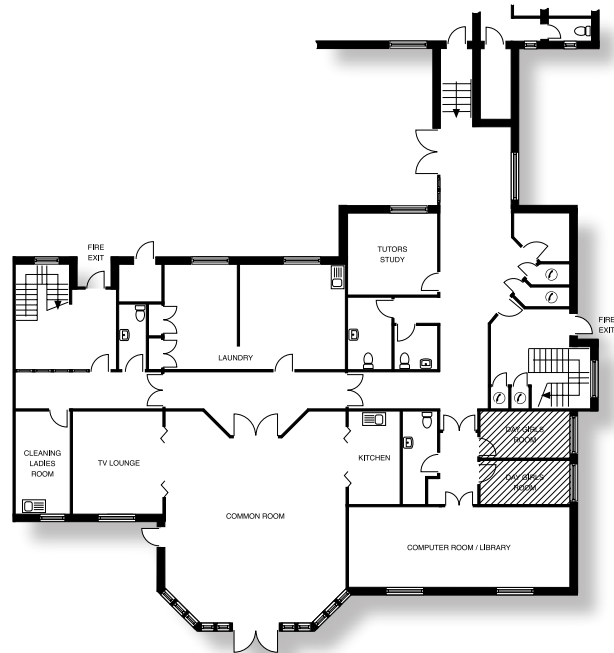
*Ample parking is available in the main carpark

BRADFIELD COLLEGE ENTERPRISES LIMITED

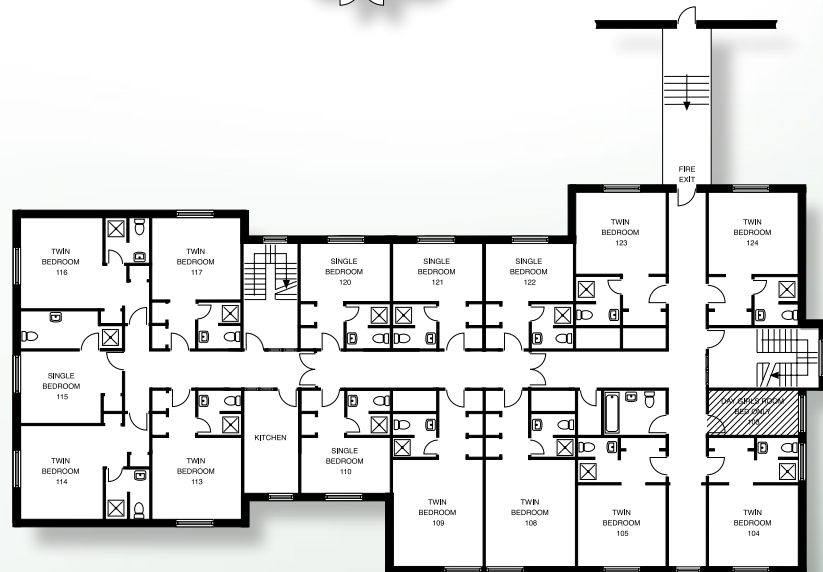
Bradfield, Reading, Berkshire RG7 6AU
 Telephone: 0118 964 4570 Fax: 0118 964 4591
 Email: enterprises@bradfieldcollege.org.uk

Bradfield College: **Steven's House.**

Ground Floor



First Floor



Second Floor

